



FOSTER HOME CHECKLIST

Important steps to kitten-proof your home

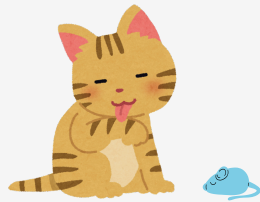


CREATE A SAFE SPACE FOR THE INITIAL, 2-WEEK QUARANTINE

- Choose a small, quiet and easy to disinfect room (like a bathroom or small bedroom).
- Place litter box in back corner
- Set up food and water dishes away from litter box
- Provide a safe hiding spot (box, covered bed, crate with door removed).
- Add comfortable bedding (blankets, towels, pet beds) to multiple spots.
- Include several different types of toys (wand, ball, kicker)
- Avoid any string toys when unsupervised.
- Add disposable scratching pad
- Plug in calming pheromone diffuser and white noise machine.
- Rotate toys to keep things interesting. A busy kitten is less likely to get in trouble!

COMMON HAZARDS

- Rubber bands, Hair ties
- Paper clips
- Feathers
- Plastic Bags
- Stuffing from toys
- Floss, Yarn, String, Ribbon
- Small parts like button batteries or plastic eyes from toys.
- Medications



COMMON TOXINS

- Toxic house plants
- Chocolate
- Onions & Garlic
- Grapes & Raisins
- Alcohol & Caffeine
- Cleaning supplies
- Xlitol (artificial sweetener)



QR Code for ASPCA Poison Control list of toxic plants

GENERAL HOME SAFETY

- Cover or secure all electrical cords
- Unplug/Remove all unused appliances
- Keep toilet lids closed
- Hide easily breakable items
- Ensure window screens are secure
- Store all cleaning supplies, soaps and chemicals in closed/secure cabinet.
- Cover and secure all trash containers
- Keep food (especially chocolate, onions, raisins, etc.) out of reach
- Store all sharp utensils away
- Never leave hot stoves or open ovens unattended
- Be careful when closing cabinets, washers, dryers, refrigerators and dish washers that you are not trapping a curious visitor.
- Securely store all medications
- Secure all hanging cords from blinds
- Hide all small items like jewelry, hair ties, earbuds, etc
- Remove any potentially toxic essential oil diffusers
- Identify and secure any gaps or escape points.
- Be cautious when entering and exiting your home
- Check hiding spots before sitting down and be careful when closing recliners.

COMFORT ESSENTIALS:

- Provide vertical space like cat trees, shelves and window perches.
- Create a safe and quiet hiding spot away from general activity of the home.
- Place scratching poles near furniture to direct away from furniture.
- Let cats explore at their own pace.
- Slowly introduce to any resident pets
- Establish a routine of feeding, cleaning and playing

